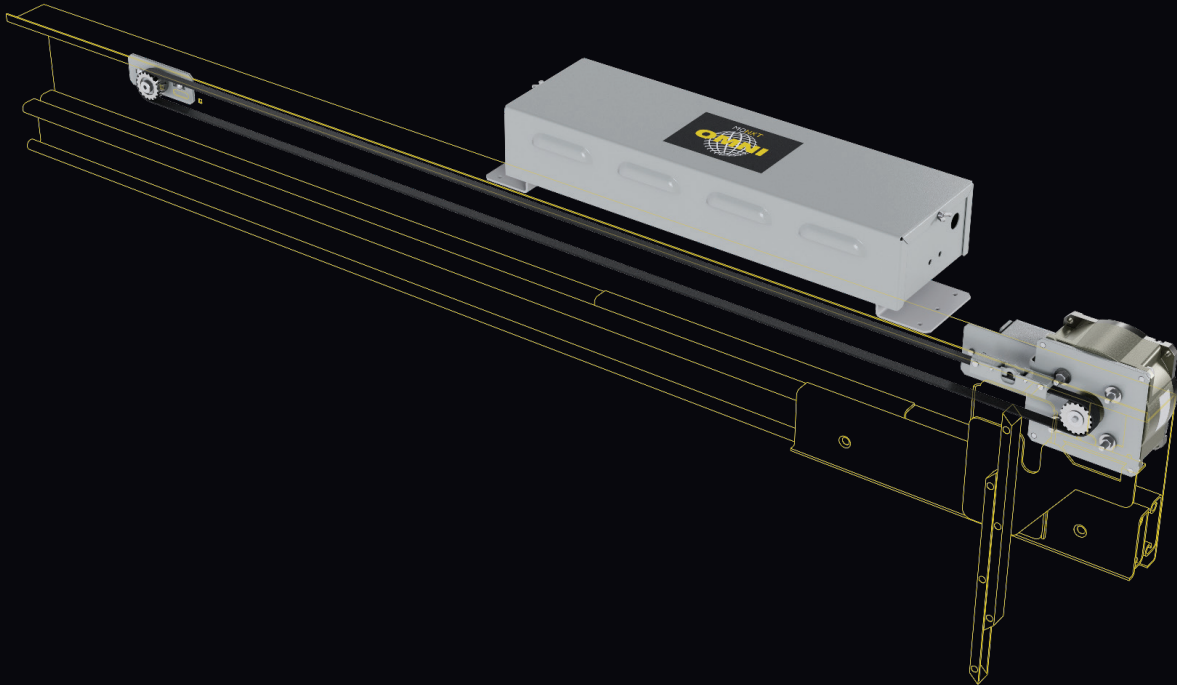


Conversion Kit: SCHINDLER 3300 to GAL MONXT



PRE-ENGINEERED GAL CONVERSION KIT for the SCHINDLER 3300 Linear Operator

Built on GAL's latest non-proprietary linear platform, the MONXT, this kit allows you to keep all existing door hangers, clutches, and interlocks of the SCHINDLER 3300.

Kit provides all necessary components to convert the operator to a GAL drive, all under one part number.

BENEFITS

- CSA B44/ASME A17.1 approved
- 1200 lbs. total panel weight capacity
- Only need to confirm operator model, no surveys!
- Conversion can be performed quickly and easily
- AC Voltage 115/230 VAC
- 1/2 HP motor
- Single operator number for all door styles and opening sizes
- These new kits are built on a universal standard, non-proprietary platform (MONXT)
- The kit contain an easily learned tool and software
- Kit has all you need for the installation from start to finish
- Retain all existing door hangers, clutches, and interlocks
- GAL Operator uses Discrete Communication to the Controller

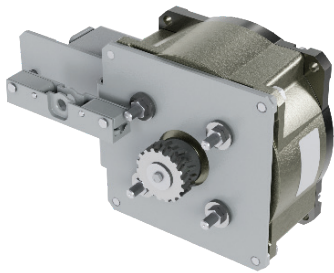


Conversion Kit: SCHINDLER 3300 to GAL MONXT

MODERNIZATION KITS

KIT06-5001N - SCHINDLER 3300 TO MONXT

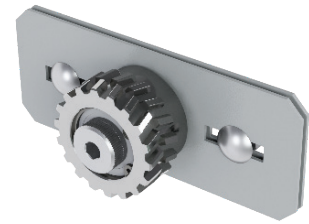
CONTENTS OF EACH KIT



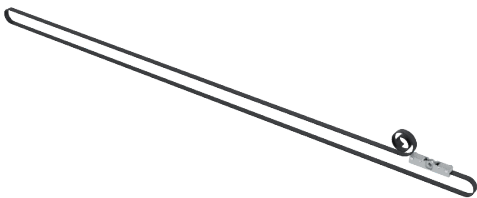
*MOTOR ASSEMBLY w/
MOUNTING BRACKET*



*MONXT DRIVE ASSEMBLY w/
PARAMETER UNIT
230V and 115V*



*IDLER PULLEY
ASSEMBLY*



DRIVE BELT ASSEMBLY



*INSTALLATION
MANUAL*



*OPERATOR DISCRETE
WIRING REQUIRED
(Non-GAL Controllers)*

When using **GAL** Door operators with **NON-GAL Controllers**, please ensure that communication wiring from the Door operator with the controller is **DISCRETE**.

This kit will not communicate with a controller if **SERIAL** Communication is required (unless GAL or EC controller)

*Scan the QR code
to checkout our
other Mod Kits*



50 E. 153rd St.
Bronx, NY 10451-2104
Ph: 718.292.9000
Fax: 718.292.2034

info@gal.com
www.gal.com
sales@vantageelevation.com
www.vantageelevation.com



Chicago 877.300.5830
New York 917.336.4597
Miami 877.241.9354
L.A. 877.300.5816
Dallas 469.706.9316
Toronto 888.425.2262