

# GL171X

## 1:1 Gearless Traction Machine



## POWERFUL, ENERGY-EFFICIENT PERFORMANCE

Cost-effective, gearless solution designed to fit through 30-inch doors

### BENEFITS

- Energy-efficient operation; 90% electrical efficiency and can work with regenerative drives for further power savings
- Excellent ride quality
- Space-saving design
- Low maintenance
- Runs cool, no blower required
- Thoroughly tested before shipment to ensure a cost-effective operation

### FEATURES

- 28 pole motor for a smooth, quiet operation
- Fits through a 30-inch door
- Speed: Up to 500 fpm
- Capacity: Up to 3,500 lbs. at 50% counterweight Roping: 1 to 1, Single Wrap
- Grooving: Up to (8) – 3/8" or (7) – 1/2" ropes
- Designed for standard, regular lay rope, but can use high-strength IWRC rope
- Maintenance-free sealed bearings
- Available for both overhead and basement applications
- Can be mounted overhead (down-pull), basement (up-pull)
- Sub-bases available that can incorporate the Rope Gripper® and/or deflector sheaves
- Available with two independent braking systems, each capable of stopping and holding 125% capacity\*
- Sheave shaft load: 25,700 lbs.
- Machine weight: 2,560 lbs.
- Buy America & Buy American



\* Hollister-Whitney's Rope Gripper® is recommended as the secondary/emergency brake system to accompany the primary disc brake.

## MACHINE RATINGS FOR 1:1 APPLICATIONS

### 20" SHEAVE | 50% COUNTERBALANCE

MODEL	LINE VOLTAGE*	CURRENT	CAPACITY AT 50% COUNTERWEIGHT**		CAR SPEED		POWER	TORQUE
	AC	AMPS	LBS	KG	FT/MIN	M/SEC	H.P.	FT-(LBS)
GL171X	480	30	3500	1588	350	1.78	22	1731
GL171X	480	30	3500	1588	300	1.52	18.9	1731
GL171X	480	30	3500	1588	250	1.27	15.7	1731
GL171X	480	25.7	3000	1360	350	1.78	18.9	1484
GL171X	480	25.7	3000	1360	300	1.52	16.2	1484
GL171X	480	25.7	3000	1360	250	1.27	13.5	1484
GL171	480	34.8	2500	1134	400	2.03	19.7	1355
GL171	480	34.8	2500	1134	350	1.78	17.3	1050
GL171	480	16.4	2500	1134	200	1.02	9.9	1355

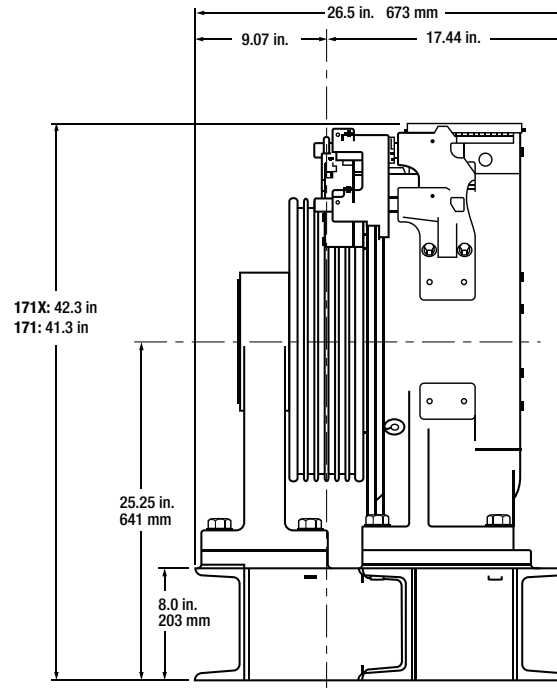
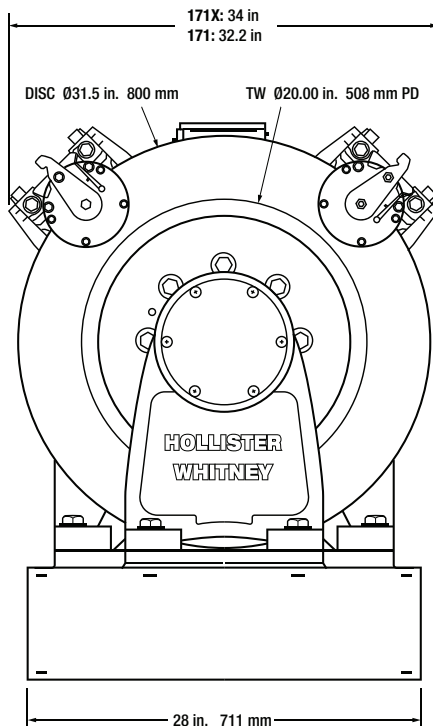
\* Contact HW for 208/220 line voltage applications.

\*\* Contact HW for 40% and 45% cwt. applications.

1:1 SINGLE WRAP TRACTION 50% CWT APPLICATIONS				
GL171X	SPEED	CAPACITY	*ROPE BRAKE	VOLTAGE
	<350 fpm	3500 lbs.	Option	Low/High
	400 fpm	2500 lbs.	Option	High
	500 fpm	3500 lbs.	Option	High

\* Secondary brake available without a rope gripper.

## MACHINE DIMENSIONS



Weight = 2,560 lbs.



A VANTAGE Company

#1 Hollister Whitney Pkwy  
Quincy, IL 62305  
Ph: 217.222.0466

sales@hollisterwhitney.com  
www.hollisterwhitney.com  
sales@vantageelevation.com  
www.vantageelevation.com



Chicago	877.300.5830
New York	917.336.4597
Miami	877.241.9354
L.A.	877.300.5816
Toronto	888.425.2262
Dallas	469.706.9316