	Document Name	Date	Rev.	Page	Bulletin
	INSTALLATION INSTRUCTIONS – SLACK ROPE SWITCH ASSEMBLY	1/19/21	A	1 of 5	1189

# INSTALLATION INSTRUCTIONS

## Installing a Slack-Rope Switch on a #193 or 194 Hollister-Whitney Tension Weight

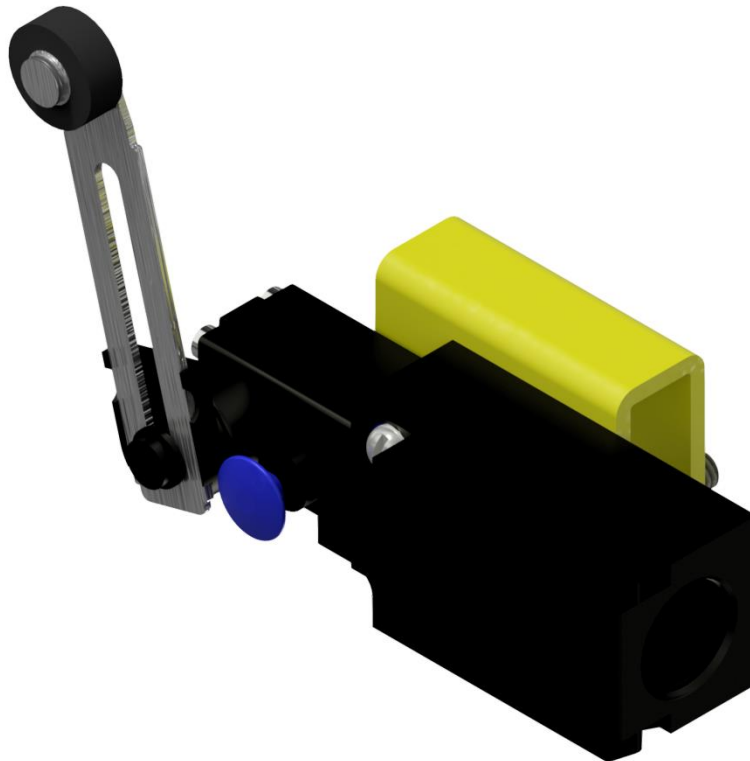


Figure 1




***BEFORE PERFORMING ANY MAINTENANCE, TAKE ALL THE NECESSARY SAFETY PRECAUTIONS TO IMMOBILIZE THE CAR AND COUNTERWEIGHT DURING THE MAINTENANCE PERIOD TO PREVENT ANY UNINTENDED MOVEMENT THAT MAY RESULT IN INJURY OR DEATH!***



***BEFORE PERFORMING ANY MAINTENANCE, REMOVE ALL ELECTRICITY FROM THE MACHINE AND BRAKES TO PREVENT ANY UNINTENDED MOVEMENT THAT MAY RESULT IN INJURY OR DEATH DURING THE MAINTENANCE PERIOD!***

***READ THE ENTIRE INSTALLATION PROCEDURE BEFORE BEGINNING ANY OF THE STEPS OUTLINED BELOW. CONTACT HOLLISTER-WHITNEY WITH ANY QUESTIONS PRIOR TO BEGINNING INSTALLATION.***

	Document Name	Date	Rev.	Page	Bulletin
	INSTALLATION INSTRUCTIONS – SLACK ROPE SWITCH ASSEMBLY	1/19/21	A	2 of 5	1189

### Warranty and Repair Information

- All parts and equipment manufactured by Hollister-Whitney Elevator Company, LLC are guaranteed against defects in material and workmanship for a period of one (1) year from the date of shipment. Warranty covers only the repair or replacement of parts, F.O.B. our factory, upon determination by inspection at our factory that warranty is applicable. Equipment and components not of our manufacture are warranted only to the extent of the original manufacturer's warranty. Our warranty specifically does not include any other incidental liability or expense such as transportation, labor, and unauthorized repairs.
- Manuals, Parts Lists and Repair Information can be found at: <https://www.hollisterwhitney.com/support/>
- **For free technical support, contact Hollister-Whitney at 1-217-222-0466.** Technical support can also be reached at: [HW Product Support <productsupport@hwec.com>](mailto:productsupport@hwec.com)

### Introduction

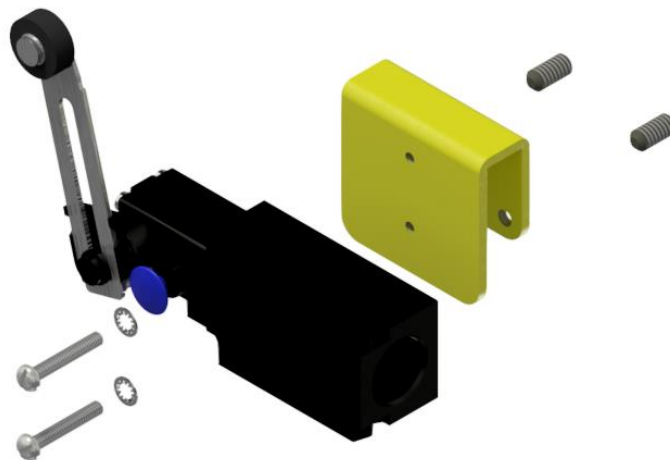
The 193-040 Slack Rope Switch Assembly is offered as a solution for detecting slack, broken or excessive rope stretch of the governor rope. In the event of a slack, broken or overstretched governor rope, the Tension Weight will activate the switch.

The instructions found here are for installing a 193-040 Slack Switch Assembly on #193 and #194 Tension Weights. All instructions assume that all the proper company safety procedures have been followed and applied prior to any work being started.

Please review Print #193-040 found at the end of this manual. If any parts are missing or damaged contact Hollister-Whitney prior to beginning any work.


Note: Flexible Conduit and Box Connectors are not included in this kit.

### Switch Assembly Installation



*Figure 2*

- Unpackage Switch. Orient Reset Button facing outwards, See Figure 2, if it is not oriented that way to begin with. Note: Reset Button will be on same side as the Contact Cover, directly opposite the Tension Weight Arm.

	Document Name	Date	Rev.	Page	Bulletin
	INSTALLATION INSTRUCTIONS – SLACK ROPE SWITCH ASSEMBLY	1/19/21	A	3 of 5	1189

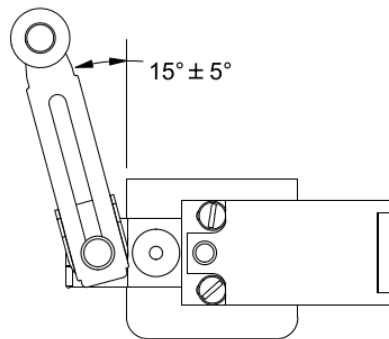


Figure 3

- Orient the Switch Activation Lever to its fullest extent and the Lever at 15°. See Figure 3.
- Attach switch to bracket using provided #8 Screws and Washers. Note orientation of Switch to Bracket. The Switch Lever will be under the Tension Weight body, and the conduit opening will be oriented towards the Rail. This orientation provides a convenient support for flexible conduit along the Tension Weight Arm.
- Start two ¼” Set Screws into the back of the Switch Bracket.
- Slip Bracket over the lower Tension Weight Arm, and place Assembly near Center of the Tension Weight body. Figures 4 & 5.
- Tighten the Set Screws securely making sure the Switch remains parallel with the Tension Weight Arm.

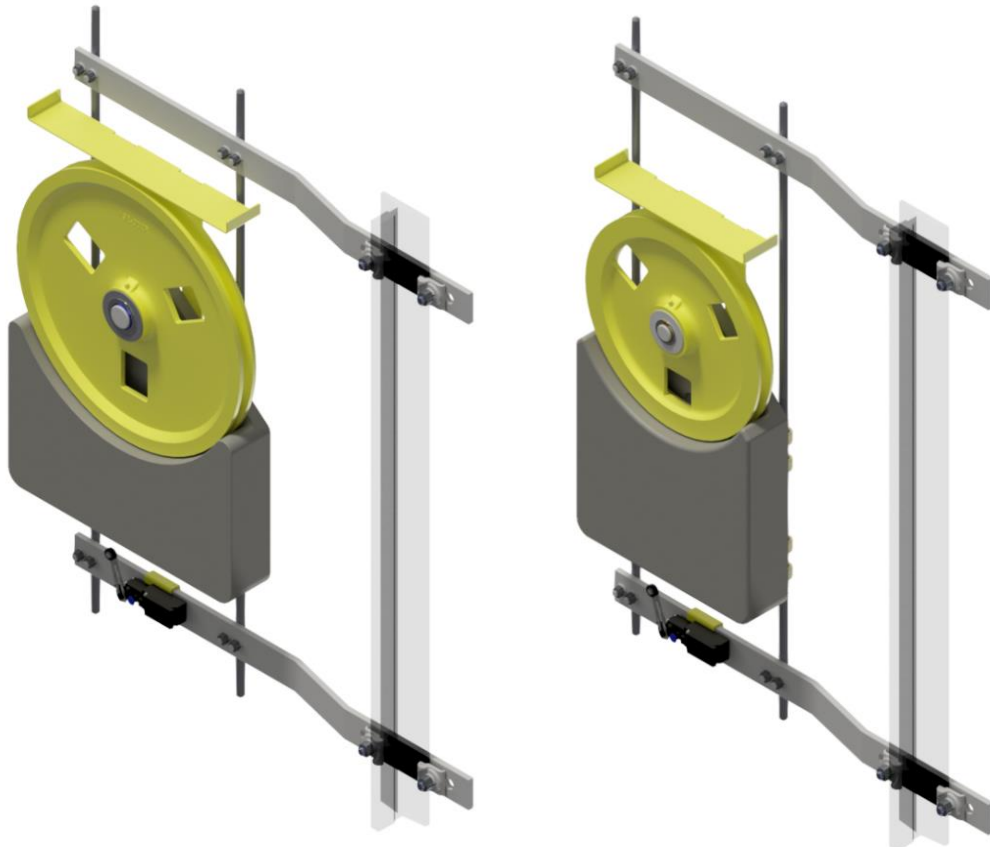

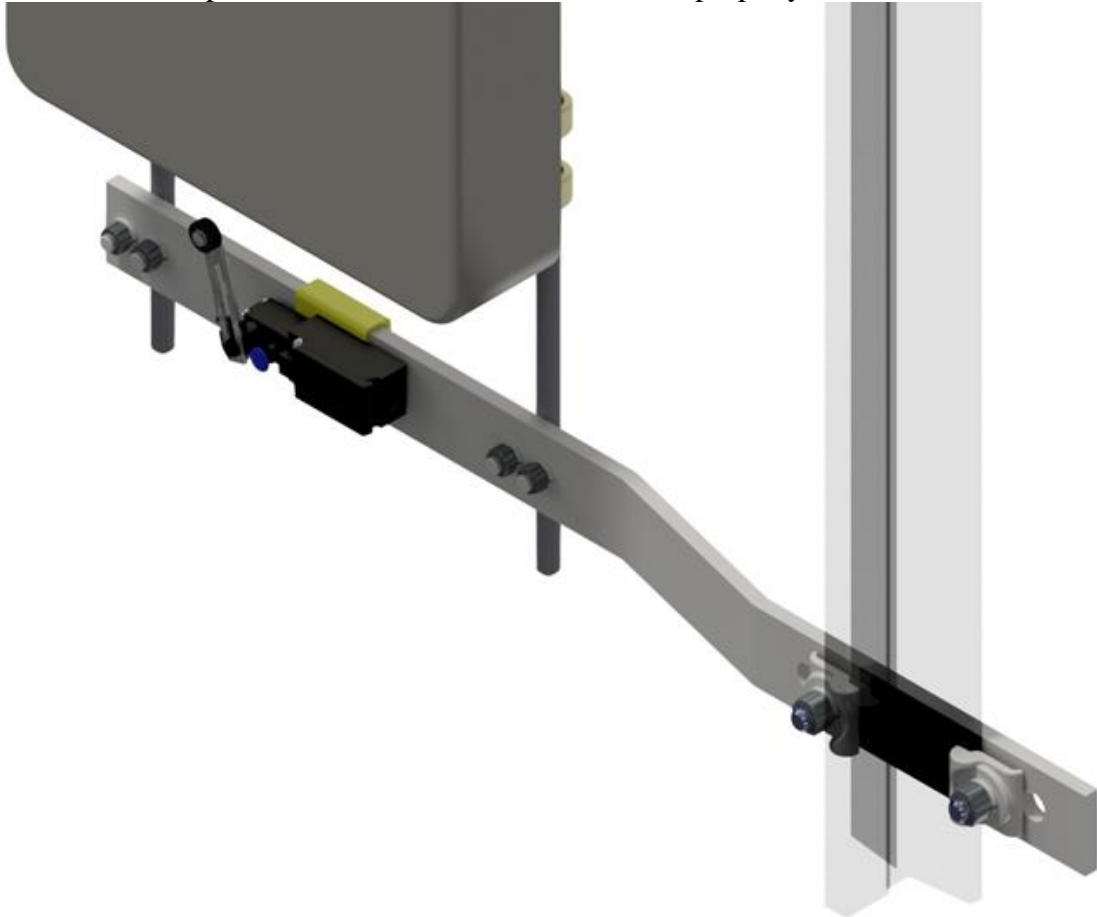


Figure 4: 193 & 194 Tension Weights with Switch Assemblies in place.

	Document Name	Date	Rev.	Page	Bulletin
	INSTALLATION INSTRUCTIONS – SLACK ROPE SWITCH ASSEMBLY	1/19/21	A	4 of 5	1189

- **IMPORTANT-** Make sure the Switch Lever Angle is such that the Switch Contacts will open before the Tension Weight bottoms out on the Tension Weight Arm or Switch Bracket. The Switch Assembly Lever will need to be repositioned if actuation does not occur properly.



*Figure 5*

- Install the Switch wiring (not included with the Switch Assembly). A connection diagram is included in the Switch box.
- Install Conduit to protect the wires as they exit the Switch.
- Wire type and installation is the responsibility of the installer. Wires and installation should meet all applicable codes.

### **Verification of Slack Rope Switch Function**

- To activate the Slack Rope Switch, rotate the arm down until the switch is tripped.
  - Confirm contacts are open
  - Confirm Switch Lever Arm is above level of the Switch Bracket (Tension Weight Body activates Switch before end of travel).

### **Switch Reset**

- To reset the Slack Rope Switch, pull the blue Manual Reset Button on the Switch.



**Document Name**  
 INSTALLATION INSTRUCTIONS –  
 SLACK ROPE SWITCH ASSEMBLY

**Date**  
 1/19/21

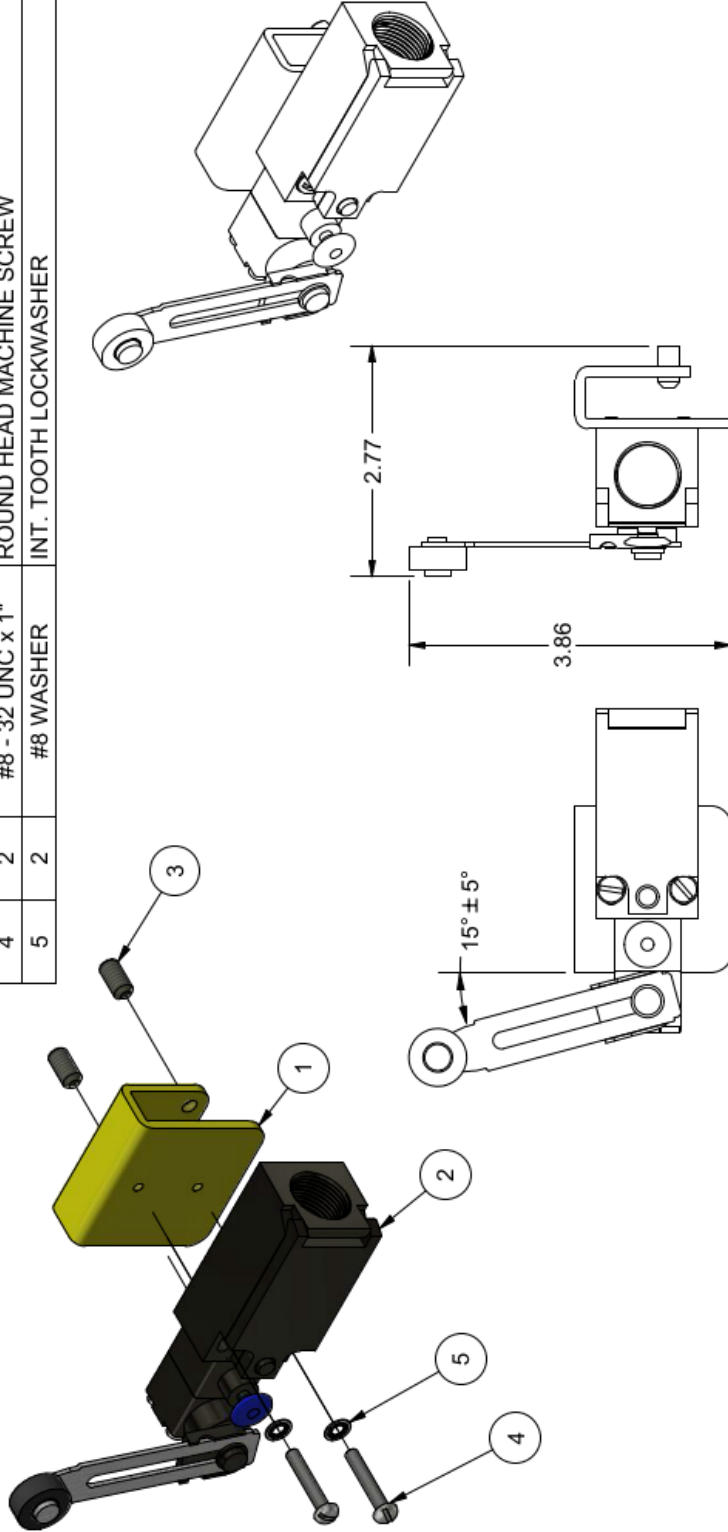
**Rev.**  
 A

**Page**  
 5 of 5

**Bulletin**  
 1189

**PARTS LIST**

ITEM	QTY	PART NUMBER	DESCRIPTION
1	1	193-041	SWITCH BRACKET - SLACK ROPE
2	1	211-124	SWITCH, LIMIT, MANUAL RESET, ADJ. ROLLER LEVER
3	2	1/4-20 UNC x 0.5	SET SCREW, CUP OR KNURL POINT
4	2	#8 - 32 UNC x 1"	ROUND HEAD MACHINE SCREW
5	2	#8 WASHER	INT. TOOTH LOCKWASHER



WEIGHT: 0.4 lbmass

<b>HOLLISTER-WHITNEY</b> ELEVATOR CO. LLC		<b>SLACK ROPE ASSEMBLY - TENSION WEIGHT</b>	
TITLE		DRAWN BY	SCALE
LTL		LTL	1:2
SHEET SIZE		MATERIAL	SEE PARTS LIST
A		DATE	8/31/2020
PRODUCTION RELEASE, PUR #1440		REFERENCE TOL.	ALL DIMENSIONS REFERENCE UNLESS OTHERWISE SPECIFIED
LTL		193-040	SHEET 1 OF 1
1/19/21		THIRD ANGLE PROJECTION	
A			
<p>THIS DRAWING IS SUPPLIED AS A REPRESENTATION OF THE EQUIPMENT HOLLISTER-WHITNEY ELEVATOR CO. LLC ("MANUFACTURER") HAS AGREED TO SUPPLY. SLIGHT ADJUSTMENTS MAY OCCUR DURING MANUFACTURING AND INSTALLATION. ANY MODIFICATIONS NOT APPROVED IN WRITING BY MANUFACTURER MAY AFFECT OPERATION, Voids ANY WARRANTY AND RELEASES MANUFACTURER OF ALL LIABILITY.</p> <p>THIS DOCUMENT CONTAINS CONFIDENTIAL AND PROPRIETARY INFORMATION THAT CANNOT BE REPRODUCED OR DIVULGED, IN WHOLE OR IN PART, WITHOUT WRITTEN AUTHORIZATION FROM THE MANUFACTURER.</p>			