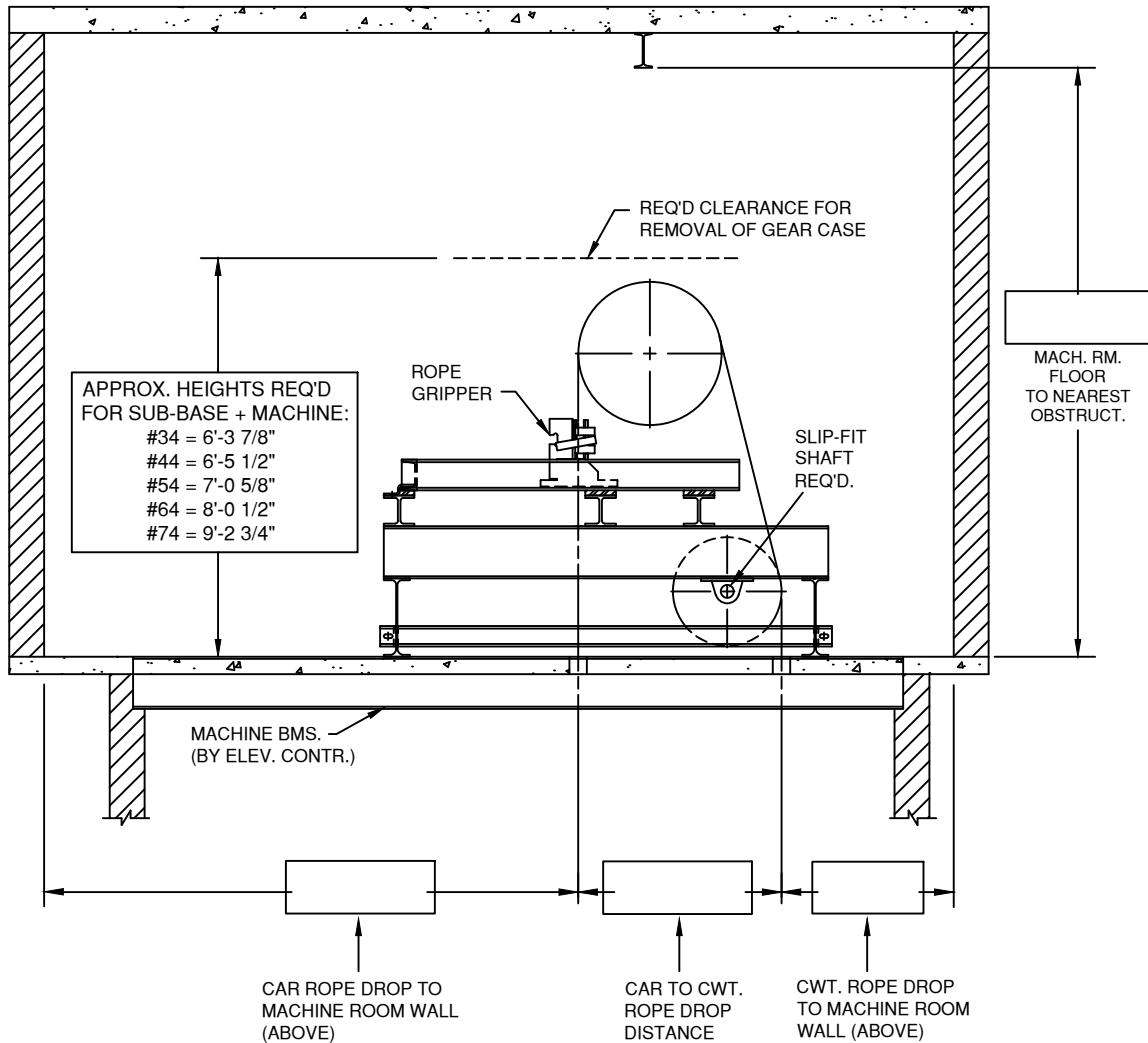




**INFORMATION REQUIRED TO MANUFACTURE
H-W GEARED MACHINE BLOCK-UP ASSEMBLY**

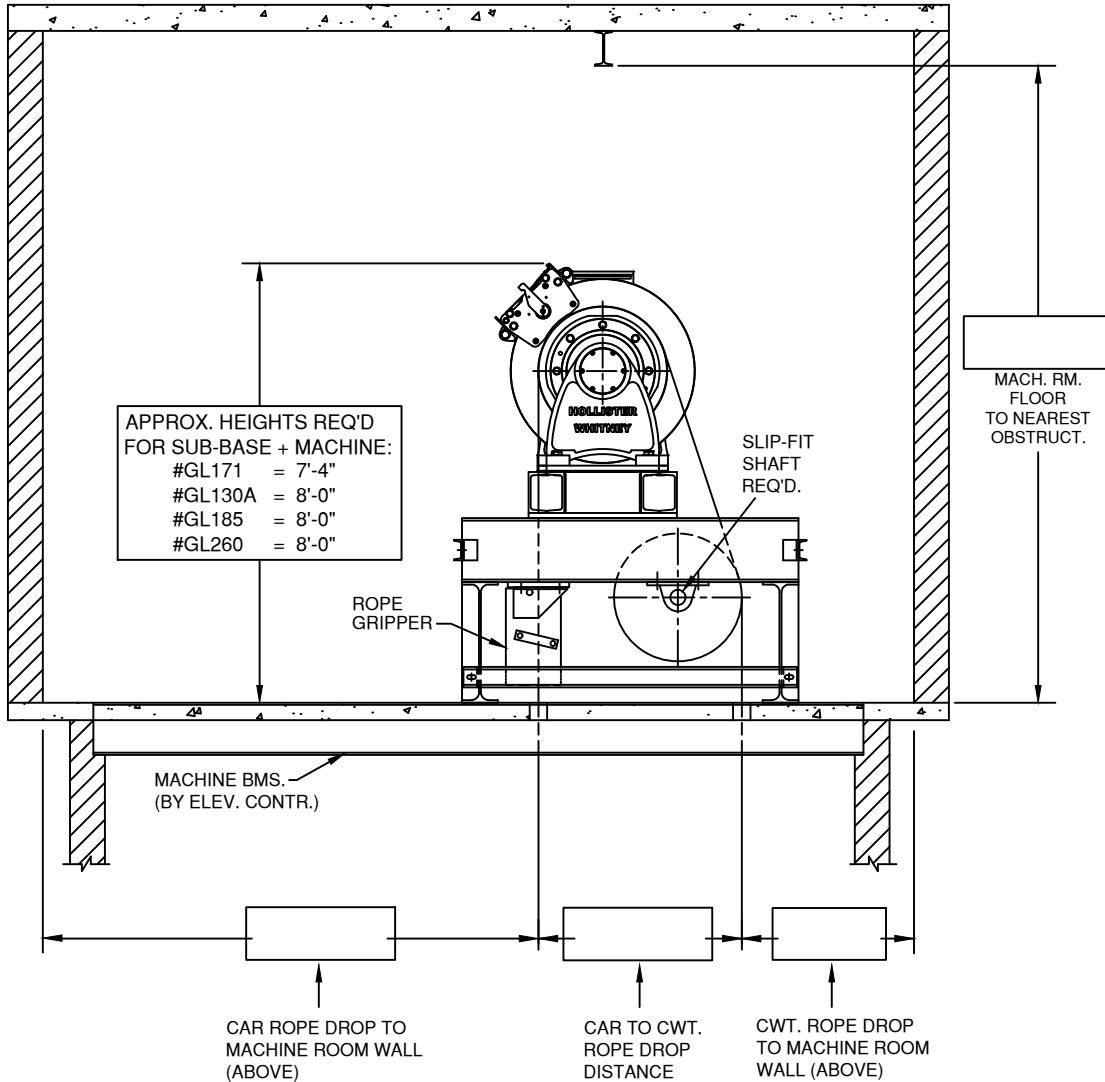


INSTRUCTIONS:

1. FILL IN OPEN DIMENSIONS ABOVE.
2. EMPTY CAR WEIGHT: _____
3. PROVIDE MACHINE ROOM PLAN SKETCH.
 - a. SHOW LOCATION OF CAR AND CWT. RAILS.
 - b. PROVIDE MACHINE BEAM SPACING LOCATING CENTERLINE SHEAVE TO CENTERLINE OF MACHINE BEAMS.
 - c. MACHINE BEAM SIZE _____ H. x _____ W.



**INFORMATION REQUIRED TO MANUFACTURE
H-W GEARLESS MACHINE BLOCK-UP ASSEMBLY**



INSTRUCTIONS:

1. FILL IN OPEN DIMENSIONS ABOVE.
2. EMPTY CAR WEIGHT: _____
3. HAND OF BLOCK-UP ASSEMBLY - LEFT OR RIGHT: _____
 RIGHT HAND - DEFLECTOR TO RIGHT OF MACHINE WHEN LOOKING AT TRACTION SHEAVE (AS SHOWN ABOVE)
 LEFT HAND - DEFLECTOR TO LEFT OF MACHINE WHEN LOOKING AT TRACTION SHEAVE (OPPOSITE OF ABOVE)
4. PROVIDE MACHINE ROOM PLAN SKETCH.
 - a. SHOW LOCATION OF CAR AND CWT. RAILS.
 - b. PROVIDE MACHINE BEAM SPACING LOCATING CENTERLINE SHEAVE TO CENTERLINE OF MACHINE BEAMS.
 - c. MACHINE BEAM SIZE _____ H. x _____ W.