



Document Name	Date	Rev.	Page	Bulletin
Installation Guide - Governor Hammer Lock Assembly	12/27/18	A	1 of 9	1181

Hollister-Whitney Elevator Co. LLC


Installation Guide Hammer Lock Assembly

#1 Hollister-Whitney Parkway
Quincy, IL 62305
Phone: 217-222-0466
Fax: 217-222-0493

www.hollisterwhitney.com

e-mail: info@hollisterwhitney.com



	Document Name	Date	Rev.	Page	Bulletin
	Installation Guide - Governor Hammer Lock Assembly	12/27/18	A	2 of 9	1181

1. Cautions and Warnings



BEFORE PERFORMING HAMMER LOCK ASSEMBLY INSTALLATION OR ANY ELEVATOR MAINTENANCE, TAKE ALL THE NECESSARY SAFETY PRECAUTIONS TO IMMOBILIZE THE CAR AND COUNTERWEIGHT DURING THE INSTALLATION OR MAINTENANCE PERIOD TO PREVENT ANY UNINTENDED MOVEMENT THAT MAY RESULT IN INJURY OR DEATH!

BEFORE PERFORMING ANY MAINTENANCE ON THE MACHINE, REMOVE ALL ELECTRICITY FROM THE MACHINE AND BRAKES TO PREVENT ANY UNINTENDED MOVEMENT THAT MAY RESULT IN INJURY OR DEATH DURING THE MAINTENANCE PERIOD!

READ THE ENTIRE INSTALLATION PROCEDURE BEFORE BEGINNING ANY OF THE STEPS OUTLINED BELOW. IF THERE ARE ANY QUESTIONS, PLEASE CONTACT HOLLISTER-WHITNEY PRIOR TO BEGINNING THE INSTALLATION.

2. Introduction

- Thank You for choosing Hollister-Whitney Governor Hammer Lock Assembly. The Hollister-Whitney Hammer Lock Assembly is designed to help retain the Governor Hammer in the engaged position, thus preventing loss of rope retention when the governor rope is gripped.

3. Verification of Parts and Governor


- Confirm all components are correct and present parts received matches the Parts List at the end of the Installation and Assembly Section (Section 5) to for Governor Application. Make sure the Governor Model is correct for the parts received.



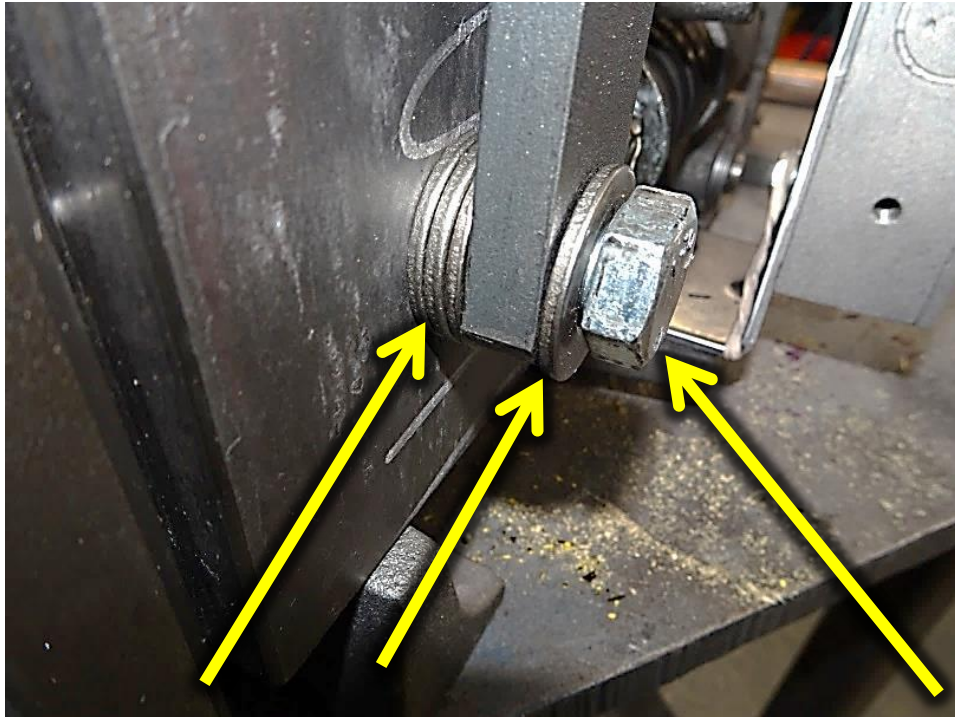
4. Tools required

- 9/16 Wrench
- 3/4 Wrench
- 15/16 Wrench
- 5/16 Allen Wrench (Hex Key)
- 3/8 Allen Wrench (Hex Key)
- 1/2" - 13UNC Tap and Holder



	Document Name	Date	Rev.	Page	Bulletin
	Installation Guide - Governor Hammer Lock Assembly	12/27/18	A	3 of 9	1181

5. Installation and Assembly



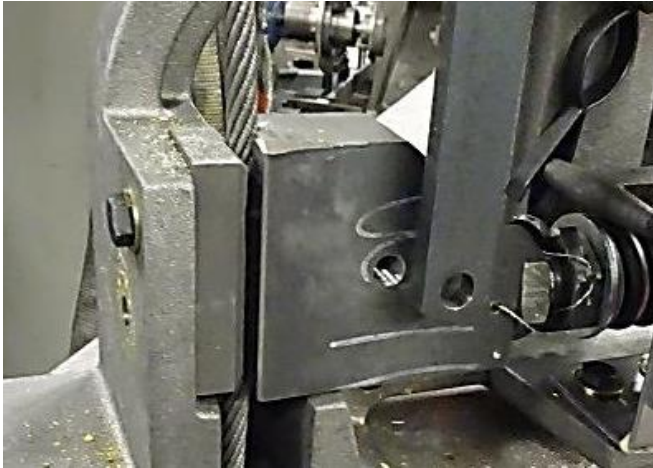
- Step 1: Fully seat the hammer head so that the hammer head is gripping the governor rope and is fully seated against the base of the governor frame. Note number and location(s) of spacer washer(s) on hammer head link bolt. Remove bolt and retain washers. This bolt has been fixed in place with thread locker, and may be difficult to remove. (207 Governor shown, 201 similar.)



- Step 2: Remove lowest grip bolt and washer. Discard washer. (207 Governor shown, 201 similar.)



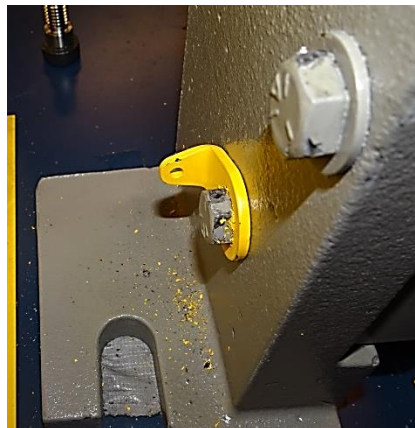
Document Name	Date	Rev.	Page	Bulletin
Installation Guide - Governor Hammer Lock Assembly	12/27/18	A	4 of 9	1181




- Step 3: Parts shown removed, washers and bolts (207 Governor shown, 201 similar.)



- Step 4: Run a 1/2"-13UNC tap through the hammer head link bolt hole to clean up the threads and remove the old threadlocker. (207 Governor shown, 201 similar.)



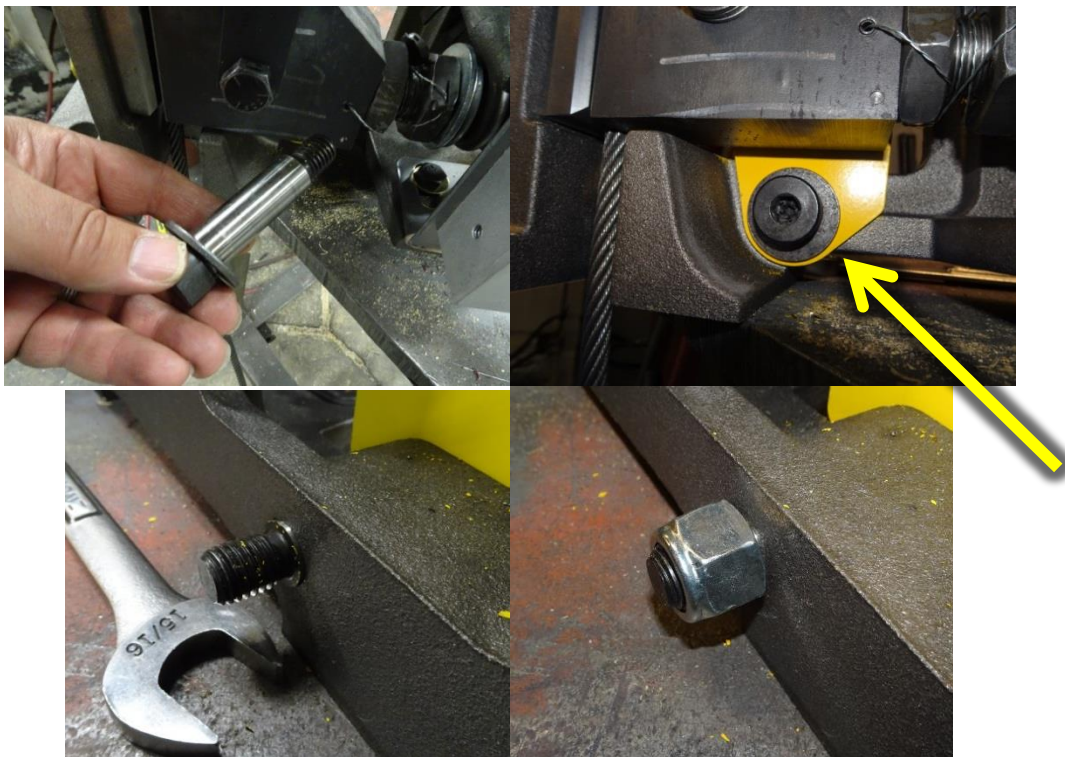
- Step 5: Install Spring Retention Washer. (201 Governor shown, 207 similar.)

	Document Name	Date	Rev.	Page	Bulletin
	Installation Guide - Governor Hammer Lock Assembly	12/27/18	A	5 of 9	1181




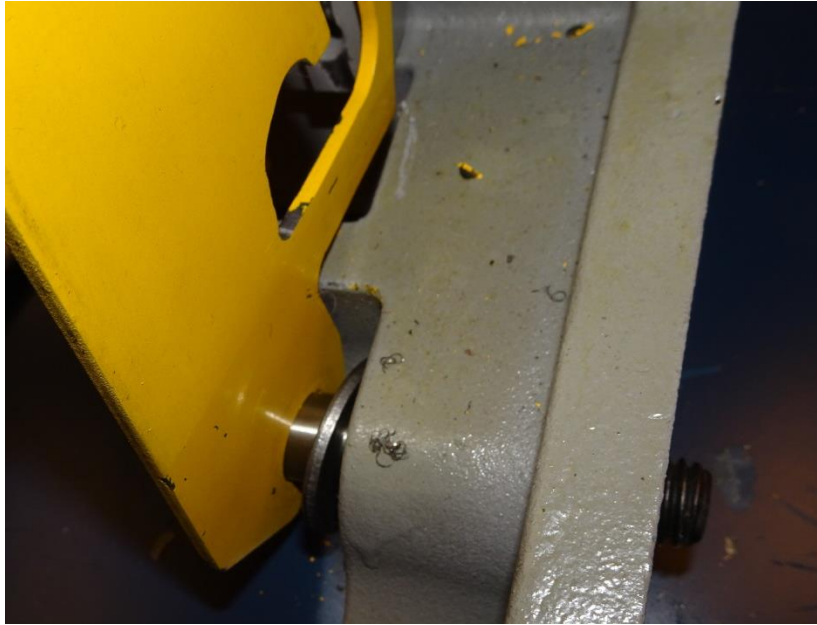
(NOTE, For Clarity, a 201display model is used above, rope has been removed so that parts can be seen more clearly. The 207 will be similar.)

- Step 6: Attach spring to Spring Retention Washer, and to Hammer Locking Plate. Insert the hammer locking plate into the governor between the frame and the hammer head. (201 Governor Shown, 207 Similar)

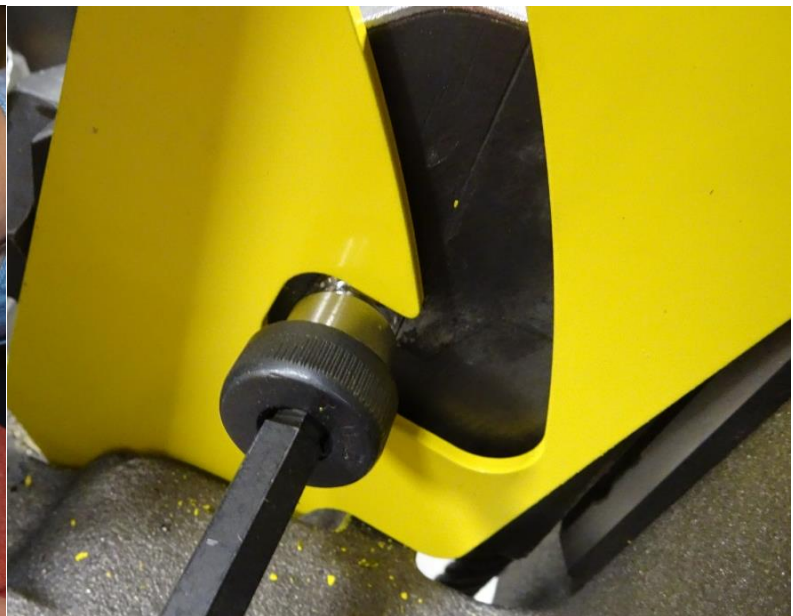


- Note, in the 207 pictured above, the washer on the pivot bolt works best on the outside of the locking plate. Field situations may vary.


	Document Name	Date	Rev.	Page	Bulletin
	Installation Guide - Governor Hammer Lock Assembly	12/27/18	A	6 of 9	1181

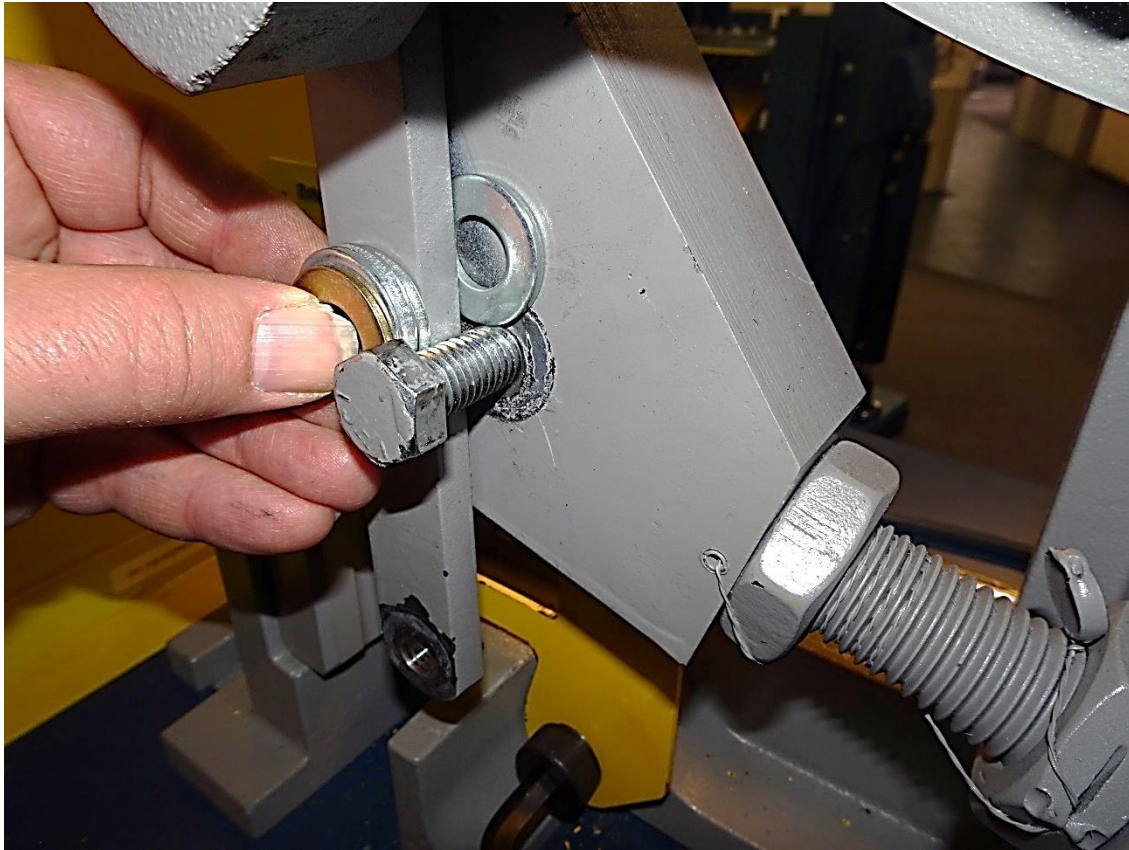


- Note, in the 201 pictured above, the washer on the pivot bolt works best between the locking plate and the frame. Field situations may vary.
- Step 7: Use the provided washer as a spacer over the large shoulder bolt. Insert it through the hammer head locking plate and governor frame. The shoulder should extend all the way through both pieces. Apply the lock nut to the sholder bolt and tighten securely. Washer location may vary due to field conditions.



- Step 8: Place a dot of thread locker on the small shoulder bolt and insert it through the locking plate into the hammer head. Tighten firmly.

	Document Name	Date	Rev.	Page	Bulletin
	Installation Guide - Governor Hammer Lock Assembly	12/27/18	A	7 of 9	1181



NOTE, For Clarity, a 201 display model is used above; rope has been removed so that parts can be seen more clearly. The 207 will be similar.)

- Step 9: Run the hammer head link bolt in to determine the new spacer washer arrangement. Washers between hammer head and link must remain the same, but more washers will be needed under the bolt head to make up for the link bolt sticking out farther due to the shoulder bolt on the other side. Test fit the bolt to judge the spacing between the link arm and the bolt head. Bolt should bottom out against the shoulder screw. Put in enough washers to fill the space but still allow the washers to be loose. In the example above the result was 2 extra washers.



Document Name	Date	Rev.	Page	Bulletin
Installation Guide - Governor Hammer Lock Assembly	12/27/18	A	8 of 9	1181



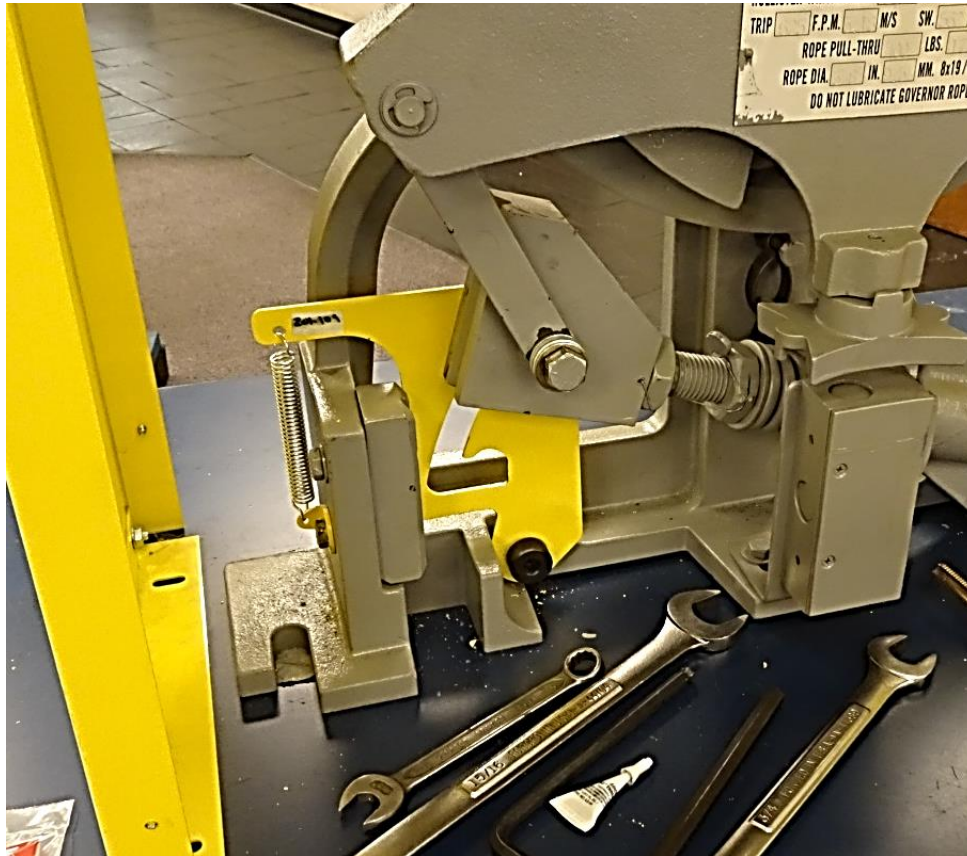
- Step 10: Remove bolt, apply a dot of thread locker and replace bolt. Use the Hex Key on the opposing shoulder bolt to hold it in place while the hex head bolt is tightened firmly.



Completed 207 Assembly, Engaged



Document Name	Date	Rev.	Page	Bulletin
Installation Guide - Governor Hammer Lock Assembly	12/27/18	A	9 of 9	1181



Completed 201 (Display Model) Assembly, Ready Position

- Step 11: When complete, the assembly should look like the above. Lift the handle of the locking plate to unseat the hammer head. Return the yoke to the ready position with the hammer pivot retained by the "clothes pin" spring on the frame.
- Step 12: Follow all proper procedures for placing the governor into service.