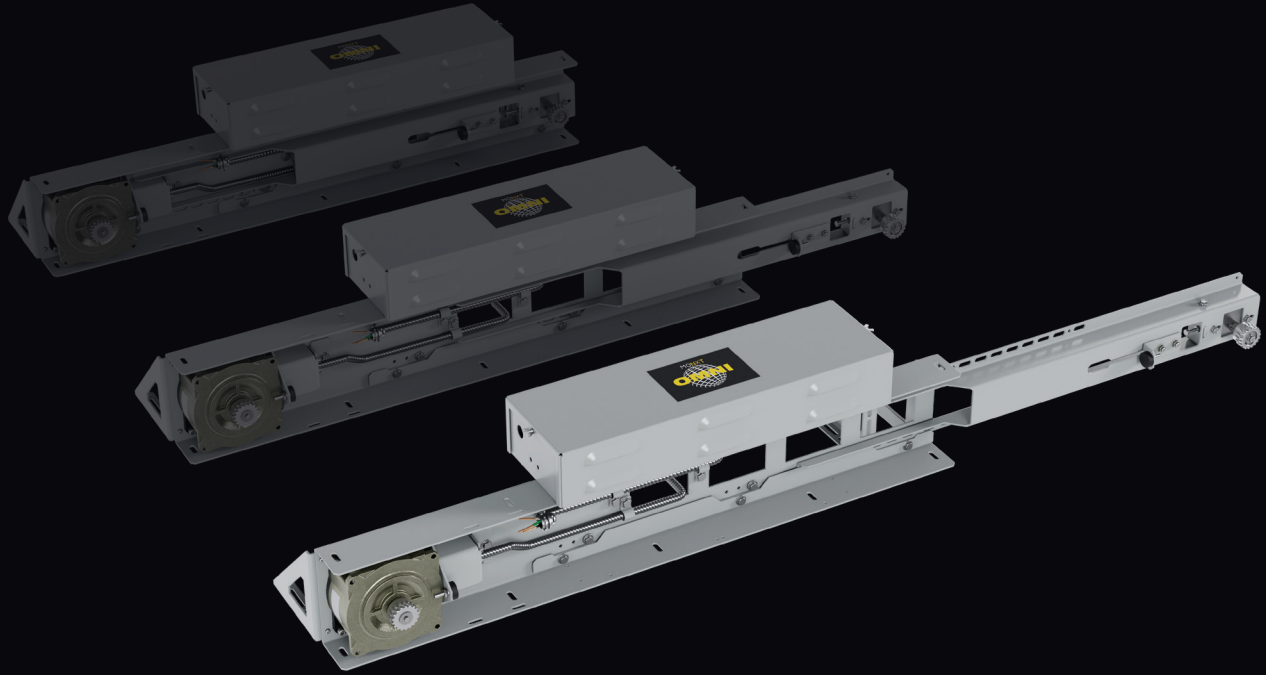


GAL MONXT - OMNI

Telescopic Linear Operator



GAL'S LATEST LINEAR OPERATOR

Designed for Modernization

The "MONXT-OMNI" is the latest addition to the GAL linear portfolio. Designed for modernizations, one unit is capable of driving most existing conditions. A telescopic channel and adjustable belt allows a single operator to open a large range of door openings. All the benefits of a non-proprietary GAL Linear operator without having to replace door hangers and/or locks.

Operator is available for side slide and center opening doors.

BENEFITS

- Capable of attaching to most equipment
- The kit contains an easily learned tool and software
- Existing tracks, door hangers, clutches and locks can be retained
- No need of surveys or voltage
- Door conversion can be performed quickly and easily
- Unit is sold non-handed and can be changed to a right closing operator in the field in minutes

STANDARD FEATURES

- CSA B44/ASME A17.1 approved
- 1200 lbs. total panel weight capacity
- AC Voltage range 115/230 VAC
- 1/2 HP motor
- The drive belt is capable of traveling up to 54"

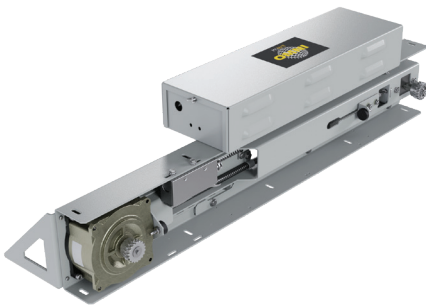


OPERATOR MODELS

OPL6-0001N - OMNI Telescopic Linear Operator Package

** Note: To use OPL6-0001N on a Multi Speed or Center Parting Opening, the existing panels must be externally related.*

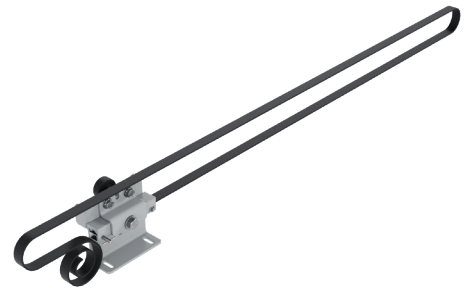
CONTENTS OF EACH KIT



MONXT - OMNI OPERATOR



DOOR ADAPTOR BRACKETS



ADJUSTABLE BELT



*INSTALLATION
MANUAL*

**Scan the QR code
to checkout our
other Mod Kits**



A VANTAGE Company

50 E. 153rd St.
Bronx, NY 10451-2104
Ph: 718.292.9000
Fax: 718.292.2034

info@gal.com
www.gal.com
sales@vantageelevation.com
www.vantageelevation.com



Chicago 877.300.5830
New York 917.336.4597
Miami 877.241.9354
L.A. 877.300.5816
Dallas 469.706.9316
Toronto 888.425.2262