



A **VANTAGE** Company

G.A.L. Manufacturing Company, LLC

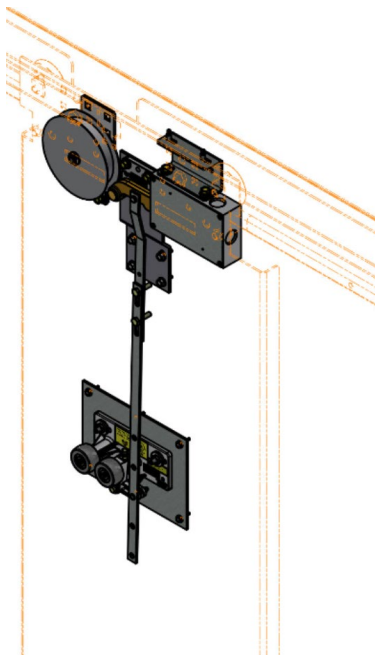
50 East 153rd Street, Bronx, N.Y. 10541

718.292.9000 || Info@GAL.com

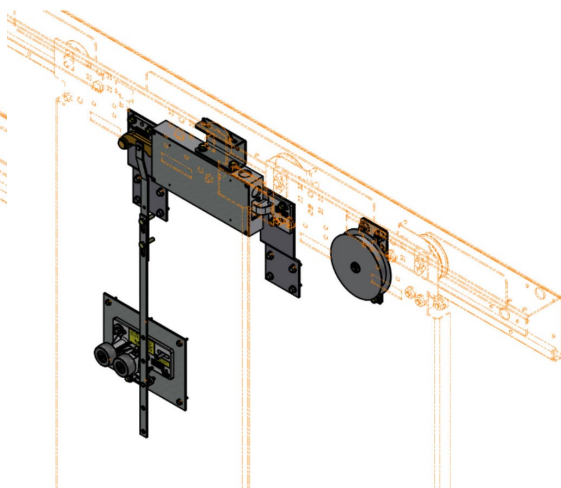
www.GAL.com

GAL Westinghouse Interlock Mounting Kit

*Designed for installing a GAL MOH or MOCPH
Interlock System in Existing Westinghouse Integral*



MOH
Interlock



MOCPH
Interlock

Installation Guide

Rev A

(intentionally left blank)

Contents

| | |
|--|----|
| Contents..... | 1 |
| 1. Introduction | 1 |
| 2. Kit Limitations | 2 |
| 2.1. Single Speed Spring Closers | 2 |
| 2.2. Two Speed Spring Closers..... | 3 |
| 2.3. Center Parting Spring Closers | 3 |
| 3. General Installation and Setup..... | 4 |
| 3.1. Preliminary Steps..... | 4 |
| 3.2. Release Roller Mounting | 4 |
| 3.3. Side Slide Doors - Keeper & Lock Box Mounting | 6 |
| 3.4. Center Parting Doors – Keeper & Lock Box Mounting | 8 |
| 3.5. Reel Closer Mounting | 10 |

1. Introduction

This kit is designed to allow for easy installation of GAL interlocks where there are existing non-GAL hatch hanger assemblies. It provides all necessary hardware for installation.

Note: These kits provide a pre-Engineered mounting solution for GAL components to mount to existing Westinghouse Integral hoistways. It is not designed to mount other manufactures' interlocks. GAL interlocks are designed to **ONLY** work with GAL clutches. For a more General solution see GAL's Universal Interlock Kits.

This kit is not appropriate for certain door openings outlined in the next section.

2. Kit Limitations

If the following conditions aren't met please contact GAL. Custom prints may be required and in extreme cases this kit may not be appropriate.

- Car and Hatch doors must be the same height
- Door height maximum 87"

| Door Style | Opening Width | Max. Header Pocket Height | Min. Header Pocket Depth* | Additional Document |
|--------------|---------------|---------------------------|---------------------------|---------------------|
| Single Speed | 22" – 60" | 8 5/16" | 3 11/16" | 7878-201 |
| Two Speed | 30" – 60" | 8 5/16" | 5 11/16" | 7878-202 |
| Center Part | 30" – 59" | 8 5/16" | 3 11/16" | 7878-203 |

*Assumed door thickness is 1 1/4". Otherwise 2 1/4" space is required from the face of the door.

| Kit | Includes Reel Closer | SS | 2SP | CP |
|-------------|----------------------|-----|------|-----|
| WHH-0301L/R | Yes | Yes | Yes* | No |
| WHH-0302L/R | No | Yes | Yes | No |
| WHH-0303N | Yes | No | No | Yes |
| WHH-0304N | No | No | No | Yes |

* If an existing way of relating the fast and slow doors is being retained, this kit can be used.

2.1. Single Speed Spring Closers

*****Spring Closers are NOT part of WHH-302L/R.**

To use Spring Closers see chart below.

Reel Closers come with WHH-0301L/R. ***

| GAL P/N | GAL Part Desc. |
|-------------|---------------------|
| CL5-0001L/R | CLOSER, SS 22-27 DO |
| CL5-0002L/R | CLOSER, SS 28-35 DO |
| CL5-0003L/R | CLOSER, SS 36-40 DO |
| CL5-0004L/R | CLOSER, SS 41-44 DO |
| CL5-0005L/R | CLOSER, SS 45-48 DO |

2.2. Two Speed Spring Closers

***** To relate fast and slow doors, GAL sells Spring Closers that are opening specific. Closers are NOT provided as part of WHH-0302L/R. See chart below to add closers to your order.**

Reel Closers come with WHH-0301L/R ***

| GAL P/N | GAL Part Desc. |
|-------------|--------------------|
| CL5-0006L/R | CLOSER 2S 24 DO |
| CL5-0007L/R | CLOSER 2S 25 DO |
| CL5-0009L/R | CLOSER 2S 26-27 DO |
| CL5-0011L/R | CLOSER 2S 28-35 DO |
| CL5-0012L/R | CLOSER 2S 36-40 DO |
| CL5-0013L/R | CLOSER 2S 41-44 DO |
| CL5-0014L/R | CLOSER 2S 45-48 DO |
| CL5-0015L/R | CLOSER 2S 49-51 DO |
| CL5-0016L/R | CLOSER 2S 52-54 DO |
| CL5-0017L/R | CLOSER 2S 55-60 DO |

2.3. Center Parting Spring Closers

*****Closers are NOT provided as part of WHH-0304N.**

To use Spring Closers see chart below.

Reel Closers come with WHH-0303N***

| GAL P/N | GAL Part Desc. |
|-----------|---------------------|
| CL5-0001R | CLOSER, CP 24-55 DO |
| CL5-0002R | CLOSER, CP 56-71 DO |

3. General Installation and Setup

3.1. Preliminary Steps

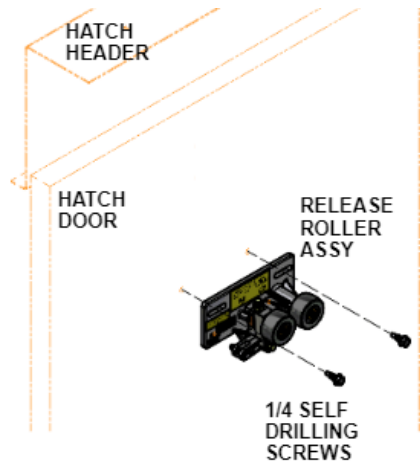
- Remove the car from service, in compliance with standard safety policies.
- Gain access to the hatch side equipment and remove existing interlocks.
- See drawings 7878-SS-WHH, 7878-2S-WHH, or 7878-CP-WHH for specific dimensions and a more detailed view of the final assembly.

3.2. Release Roller Mounting

- Determine if the reinforcement plate is required for installation.

3.2.1. Mounting w/o the Reinforcement Plate

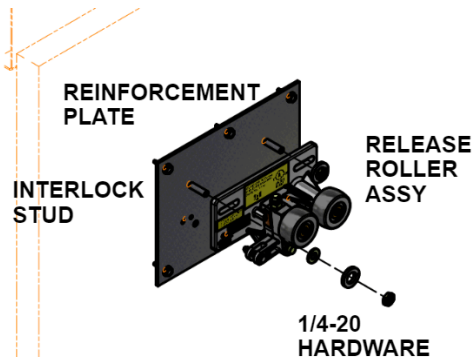
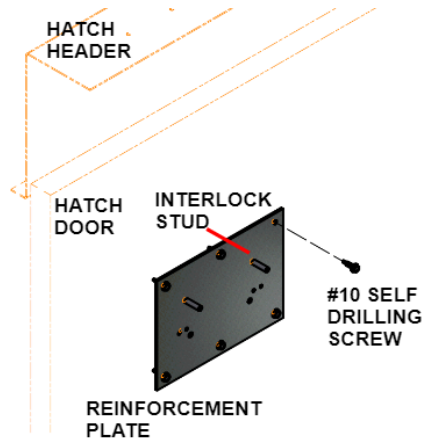
- Locate the mounting holes for the release rollers. Mark the location.
 - Refer to drawing 7878-SS-WHH for Single Speed
 - Refer to drawing 7878-2S-WHH for Two Speed
- Use 2 self-drilling $\frac{1}{4}$ screws to secure the roller assembly to the door.



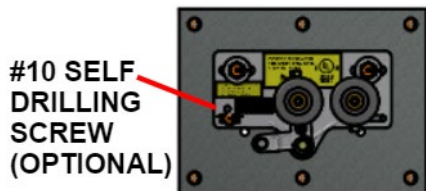
- OPTIONAL:
 - The Roller can be pinned with an additional #10 self-drilling screw to ensure that it cannot move.

3.2.2. Mounting with the Reinforcement Plate

- Locate where the interlock studs on the reinforcement plate should go. (The mounting for the roller assembly itself).
 - Refer to drawing 7878-SS-WHH for Single Speed
 - Refer to drawing 7878-2S-WHH for Two Speed
- Mark the 6 holes used to mount the reinforcement plate.
- Use 6 self-drilling #10 screws to secure the plate to the door.
- Mount the release roller to the plate stud, securing it with the 1/4-20 hardware provided.



- OPTIONAL:
 - The Roller can be pinned with an additional #10 self-drilling screw to ensure that it cannot move.



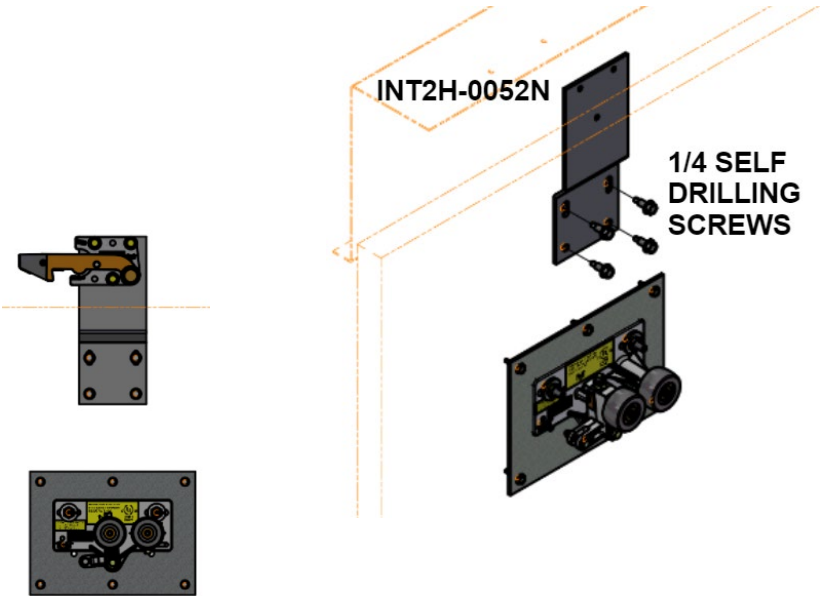
3.3. Side Slide Doors - Keeper & Lock Box Mounting



INT2H-0052N

- See 7878-SS-WHH & 7878-2S-WHH drawings for more precise illustrations and locations of below components.
- Locate the mounting holes for the keeper plate
 - The top hole should be 3 ½" from the top of the hatch header.
 - The 1st hole of the plate needs to be at least 8 ¼" from daylight to make sure there is enough room for the lock box.

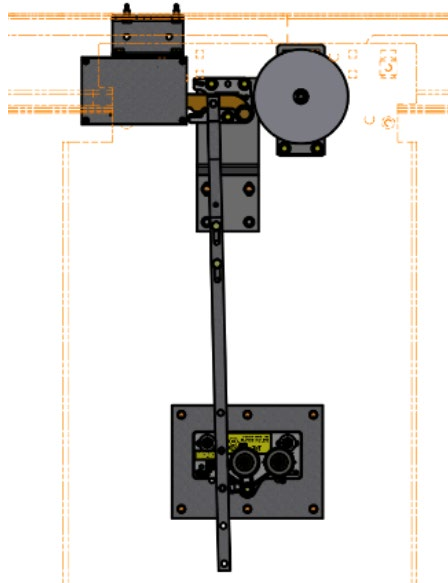
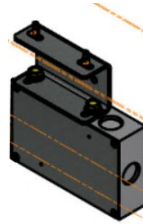
- Use 2 self drilling ¼" screws to secure the plate.
 - Note: If unsure of the final location of the keeper, only use the top 2 slots now, and all 4 screws at the end.
- Secure the keeper to the plate.



- Use 2 self drilling ¼" screws to mount the C channel (INT2H-0053N) to the top of the hatch header.



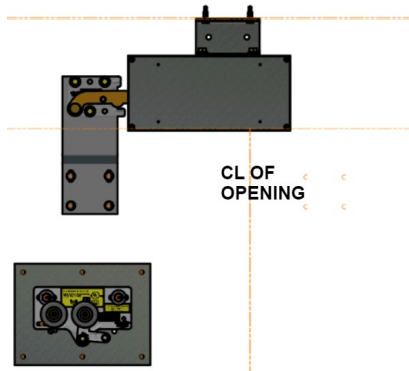
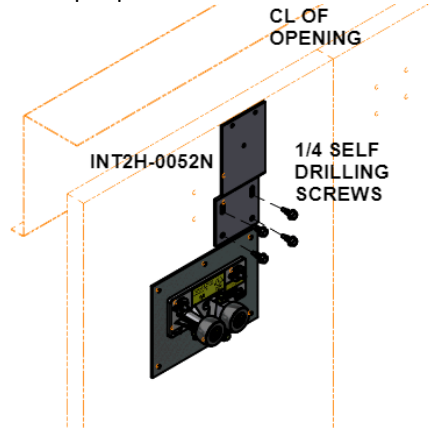
- Mount the lock box to the C channel
- Connect the upper and lower link. To pick the correct lower link:
 - B link: $10 \leq E \leq 18$
 - D link: $18 \leq E \leq 26$



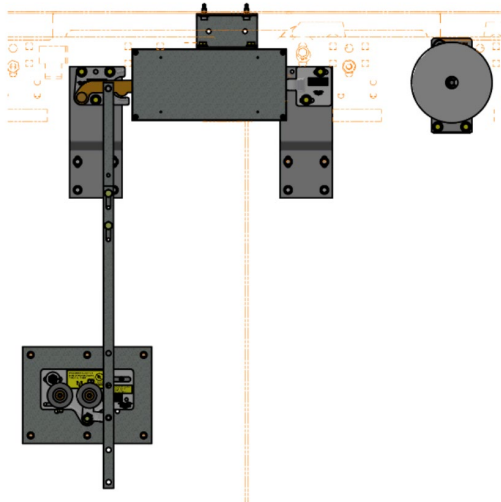
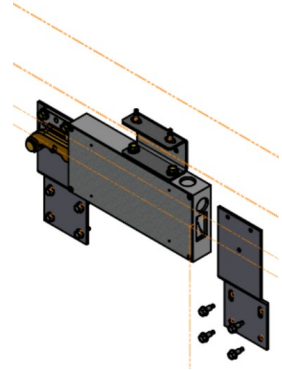
WHH-0301R Shown
Left Hand Opposite
WHH-0302L/R Similar
(Without Closer)

3.4. Center Parting Doors – Keeper & Lock Box Mounting

- Locate the mounting holes for the keeper plate on the left-hand door.
 - MO (left door) keeper plate – INT2H-0052N.
 - See drawing 7878-CP-WHH for precise location.
- Use 4 self drilling 1/4" screws to secure the plate.
 - Note: If unsure of the final location of the keeper, only use the top 2 slots now and all 4 screws at the end.
- Secure the keeper to the plate.
- Use 2 self drilling 1/4" screws to mount the C channel (INT2-0053N) to the top of the hatch header.
- Mount the lock box to the C - channel

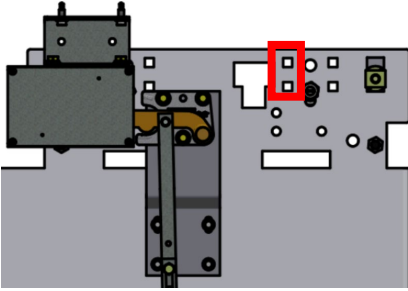


- Locate the mounting holes for the right-hand door keeper plate.
INT2H-0052N
 - Similar installation procedure to the left-hand door
 - Note new distance from CL
- Secure the stationary keeper to the plate.
- Refer to 7878-CP-WHH for more specific dimensions.
- Connect the upper and lower link. To pick the correct lower link:
 - B link: $10 \leq E \leq 18$
 - D link: $18 \leq E \leq 26$



WHH-0303N Shown
WHH-0304N Similar
(Without Closer)

3.5. Reel Closer Mounting



- Locate 2 available square punches on the integral door panel.
- Insert the carriage bolt through the back of the door and reel closer bracket.

- **NOTE:** If used with GAL's WHH track and door hanger kit, the reel closer bracket **MUST** be installed prior to installing the top retainers.
- Secure the bracket to the door.
- Attach the reel closer to the bracket.

